

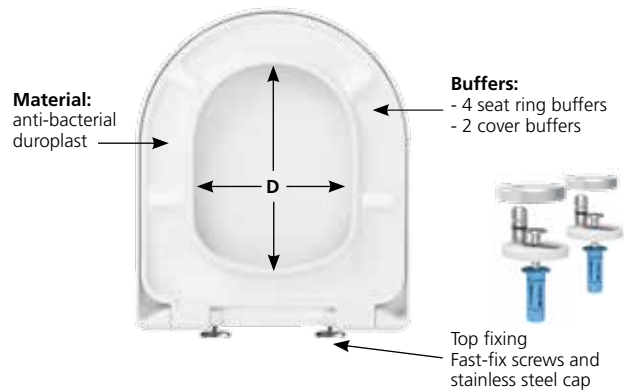
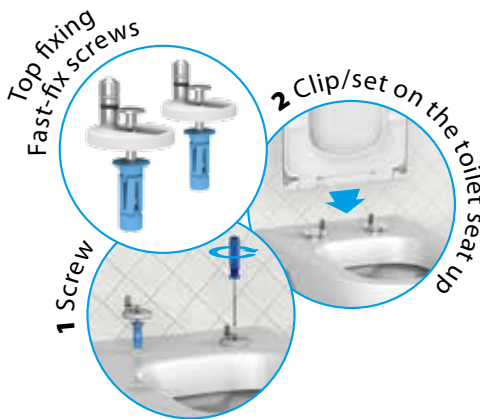
> Toilet seat soft close / Thermoset PRINCIPAUTÉ PREMIUM



D-SHAPE

DESCRIPTION

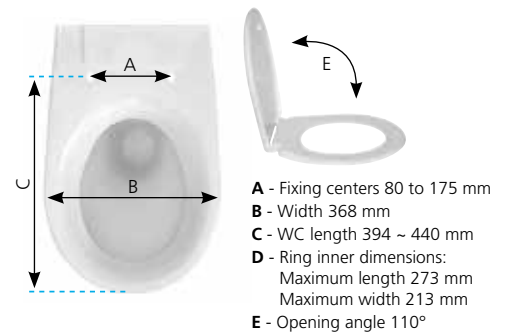
- > Wrapover and D-Shape design
- > Anti-bacterial
- > Thermoset
- > 2.5kg
- > Scratch resistant
- > Top fixing
- > Individual and adjustable stainless steel hinges, with fast-fix screws
- > Soft closing hinges
- > Quick release: easy to clean



TEXT FOR TENDERS

PRINCIPAUTÉ PREMIUM
Ref: 95 9001 10

Duroplast toilet seat, 2-year guarantee, anti-bacterial, white, 2.5 kg. Dimensions L433 mm and I368 mm, opening angle 110°. Fits all D-shaped WC having fixing dimensions from 80 to 175 mm. Individual and adjustable stainless steel hinges, with fast-fix screws. Quick release and soft closing seat.



	Ref.	Barcode	Packing	Packing			Pallet quantity
				Nb	M ³	Kg	
PRINCIPAUTÉ PREMIUM	95 9001 10	3 24723 0076413	Box	4	0.05	13.2	160



For more information:
Web: siamp.co.uk