



99T Low pressure
3/8" Brass



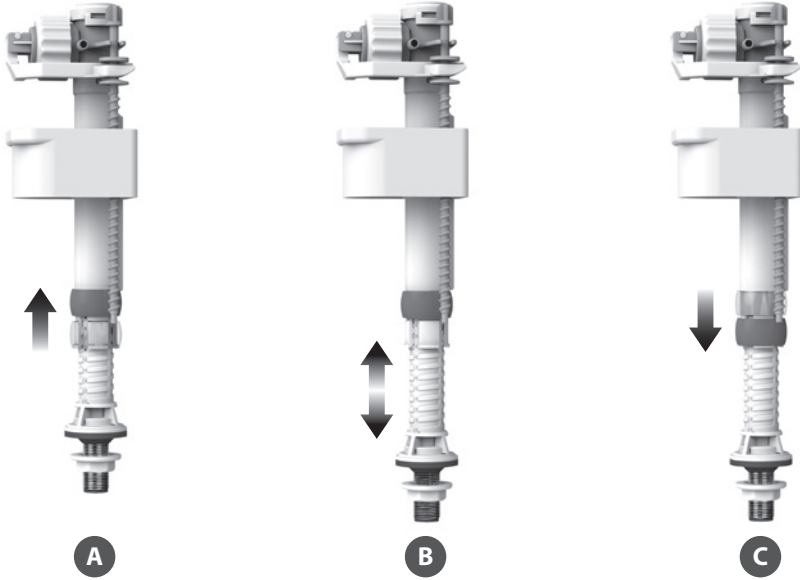
99T Low pressure
1/2" Brass



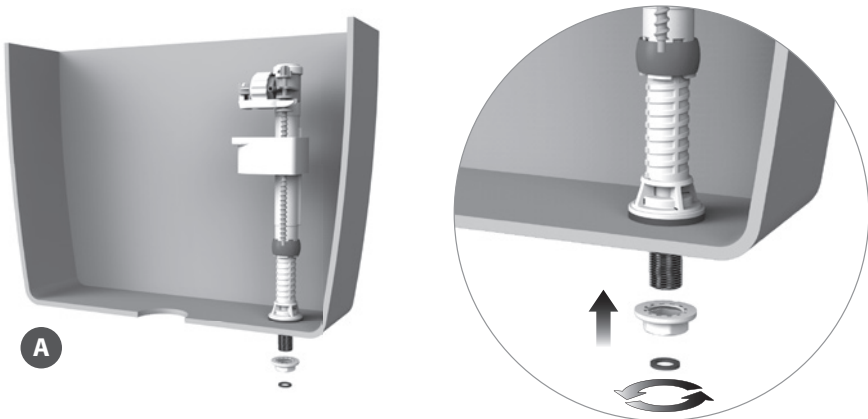
99T Low pressure
1/2" Plastic

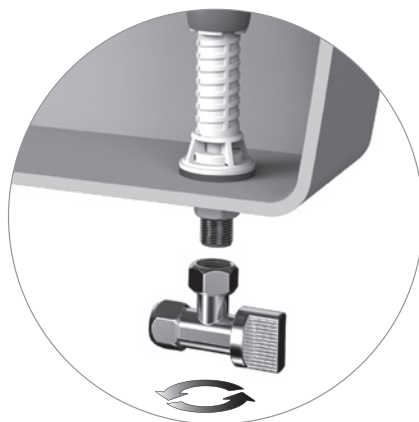
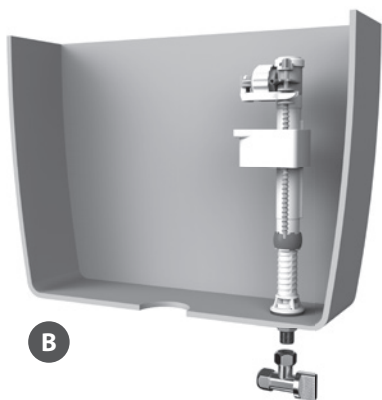


1. Height setting

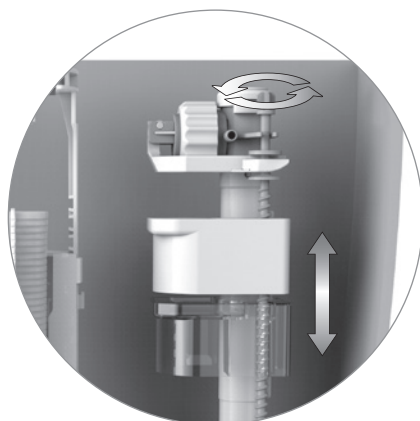
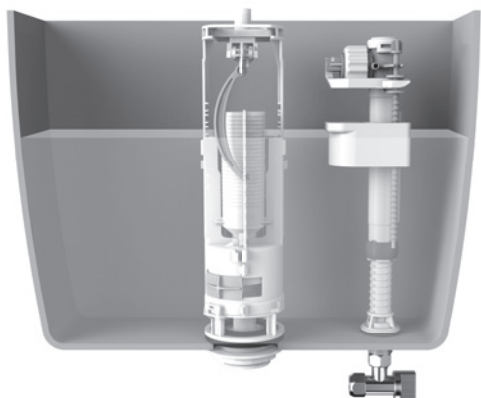


2. Inlet installation

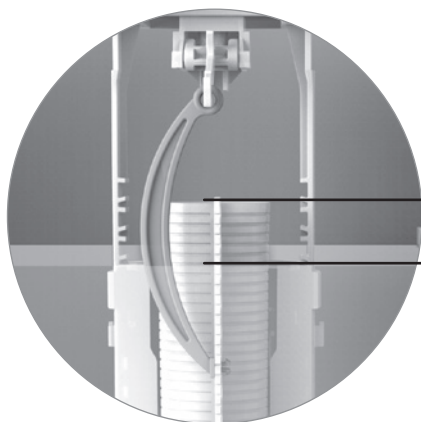




3. Water level adjustment



Adjust water level with the grey adjustable screw ; screw to increase water level, unscrew to decrease it.



⚠
2 cm min.

4. Maintenance



WARNINGS:

- An approved single check valve or some other no less effective backflow prevention device shall be fitted at the point of connection(s) between the supply and the fitting.
- Do not over tight in any case.
- Do not use any sealing paste and/or compound in any case

SIAMP UK will be not responsible in case these warnings are not respected.
